



CORVETTE "C6" 2005-2010 ZLR DOOR

U.S. PATENTS

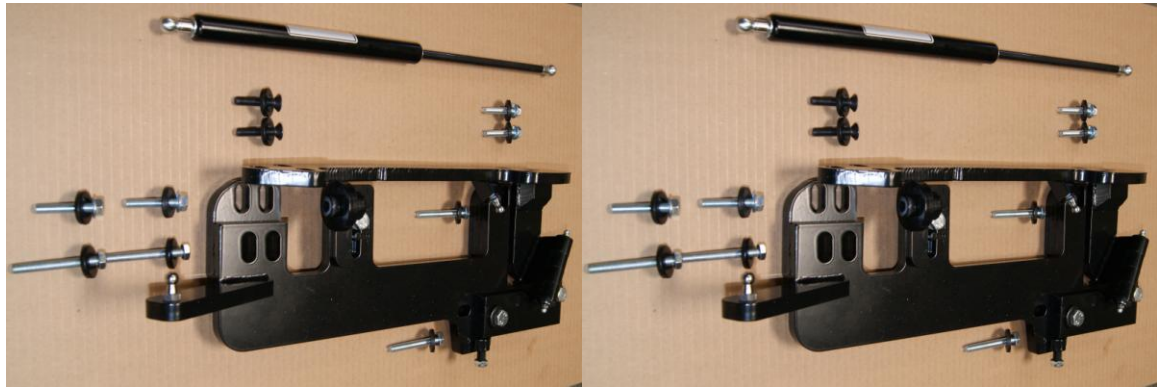
#6,808,223; #6,845,547; #7,140,075; #7,059,655

PATENTS AGGRESSIVELY ENFORCED!

**PLEASE CAREFULLY READ ALL INSTRUCTIONS BEFORE
ATTEMPTING TO INSTALL THIS PRODUCT.**

**FOR QUESTIONS PLEASE
CONTACT US AT (951) 273-1069**

REV: 7-2-07



THIS KIT INCLUDES:

➤ 8 M8-1.25X40MM BOLTS WITH WASHERS	➤ 2 SHOCKS 565 PSI
➤ 8 M8-1.25X30MM BOLTS WITH WASHERS	➤ 2 SHOULDER BOLTS WITH WASHERS
➤ RIGHT AND LEFT HINGE ASSEMBLY	➤ 2 PINS
➤ WIRE LOOM	➤ 2 FENDER BRACKETS 4 M6 X 1 BOLTS

TOOLS REQUIRED FOR INSTALLATION:

	➤ AIR RACHET, GRINDER AND CUTTER.
	➤ 7MM, 8MM, 10MM, 11MM, 13MM, SOCKETS AND EXTENSION.
	➤ FORK AND PHILLIP'S SCREW DRIVERS
	➤ SPACERS FOR THE DOOR GAP.
	➤ 3/16 ALLEN WRENCH
	➤ 1/4 & T15 TORX BIT
	➤ 9/16 WRENCH
	➤ LOCKTITE RED

OTHER TOOLS MAY BE NEEDED DEPENDING ON YOUR VEHICLE.

(Note: The pictures on the manual are for reference only they may not match your vehicle.)

Disconnect the battery.

Remove fender.

Remove all the screws down the inner part of the fender. T-15 Torx Screws.

Remove all the plastic push pins holding the fender liner. There is also a rubber flap used to access the DRL's. These do not need to be removed.

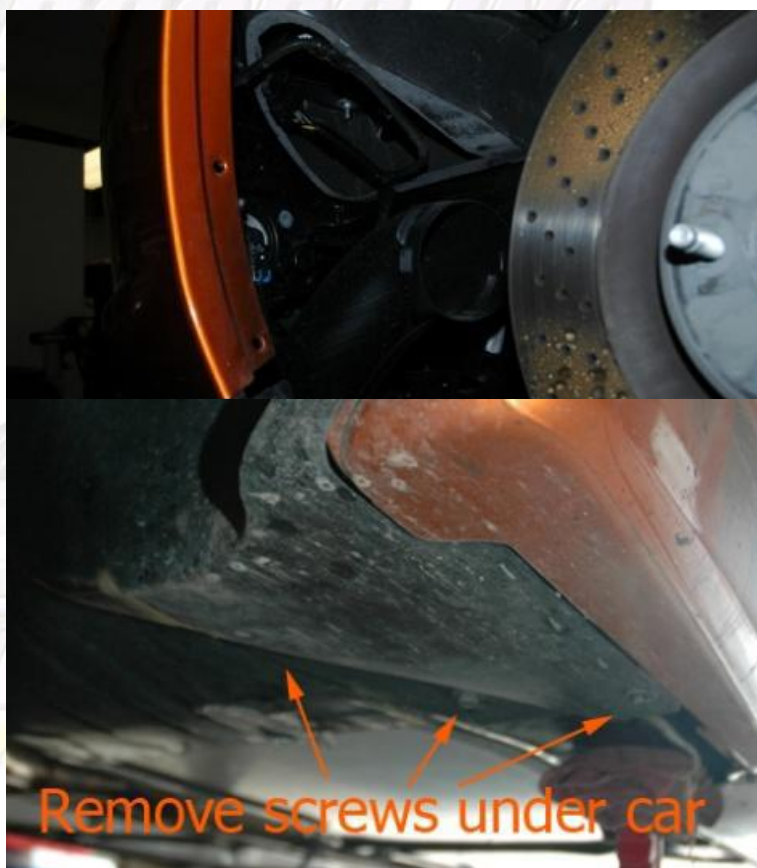
Remove the screws holding the airdam in place. They are 7mm. Also remove the nut that holds the lower part of the front bumper cover. It is a 10mm nut. You will also need to remove the plastic push pin holding the outer piece of the airdam to the middle piece. Be careful removing this pin because you could rip the rubber center



part. With all of those removed you can then remove the liner by twisting it down and out. Then just pull the brake duct assembly out.



Remove brake dust assembly



Remove the two 10mm Bolts and one 7mm Screw shown here.



Remove the factory hinges.

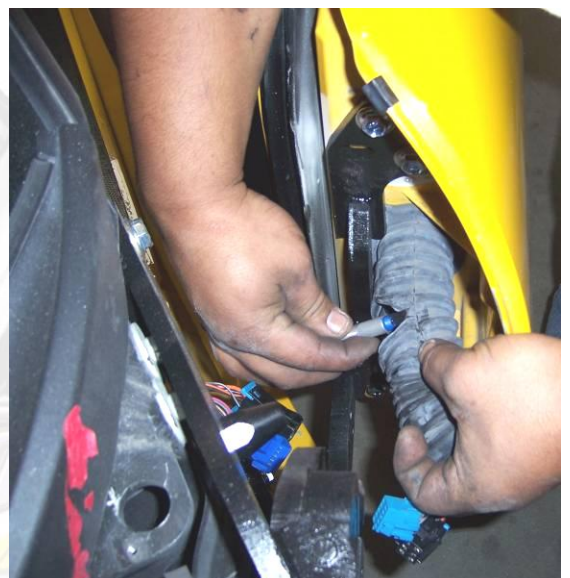
Before removing the factory hinges use painters tape to mark the factory door location on the car. Make sure to measure and mark the distance between the apron and the front of the door by the bottom and top hinge.



After making sure you have the factory location marked use several strips of 2" painters tape to secure the door to the vehicle.

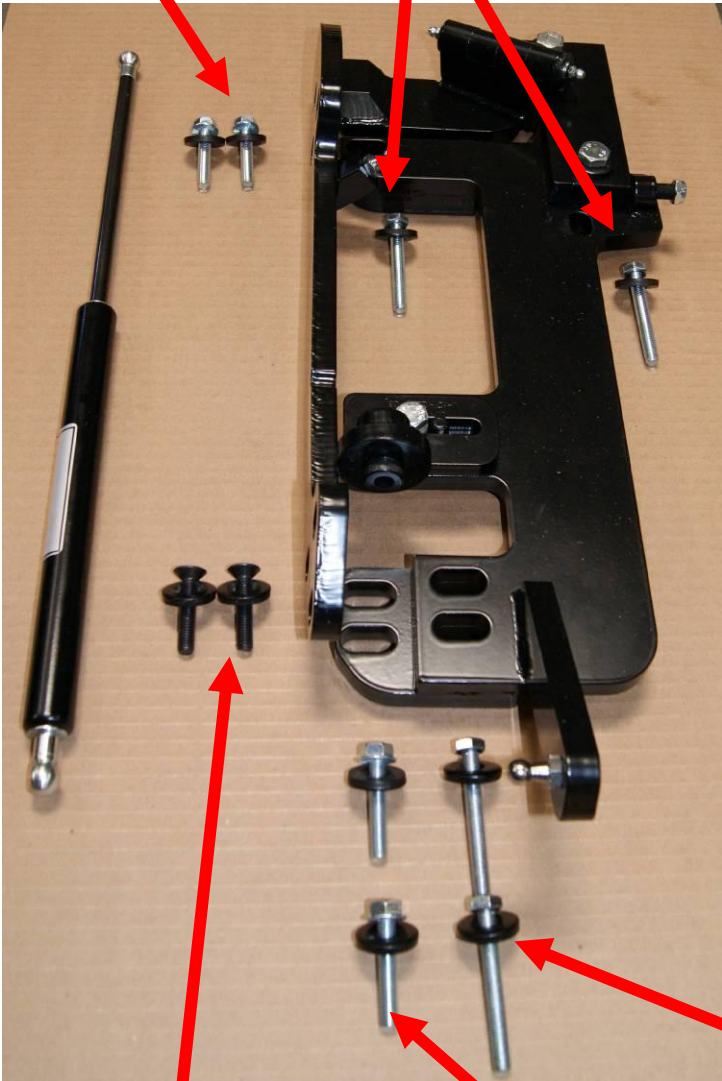
Modify the factory wire boot:

You will have to cut the factory wire boot in half; half will be used for the body and the other half will be used for the door. Use supplied wire loom to protect exposed wires.



Now you can remove the factory hinges and install the new ZLR Door kit

2 small silver bolts go on door (top)
2 large bolts on to body



2 small black bolts go on door (bottom)	2 small silver bolts go on body (bottom front)	2 large silver bolts go on body (bottom back)
--	--	---



Trim the inside of the door as shown.

Use painter's tape to protect the paint that will not be cut.

You only need to cut the small front lip in the inside of the door



Some models are equipped with door trims. If your vehicle has one you may need to move the fender trims forward about 1 inch.

Install the shocks.

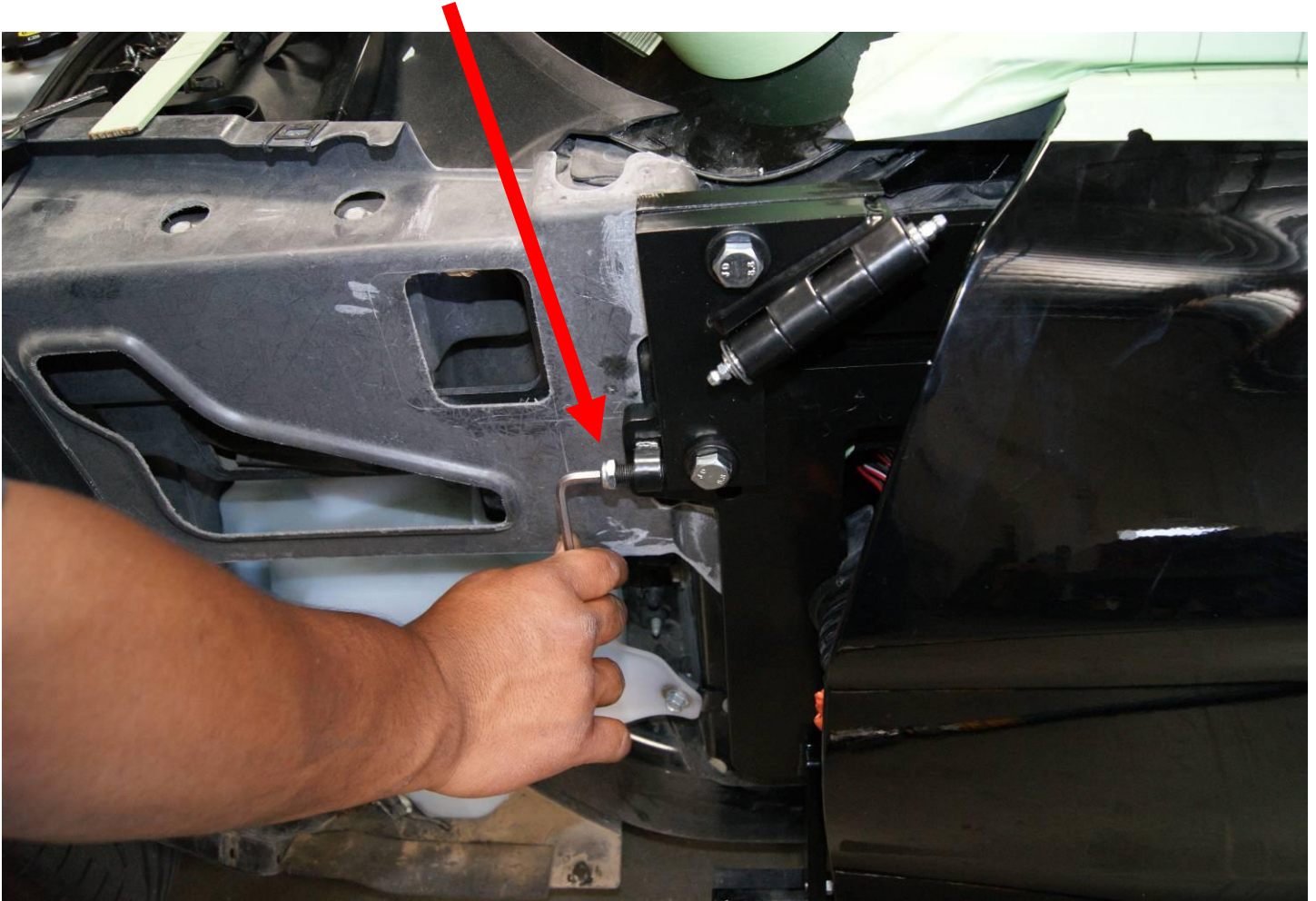
You will need a helper to raise the door slide the shock in to place and use the safety pin to secure the shock to the hinge.



Do the same for the top



After the kit is installed you can now make the fine tuning adjustments. You will need an Allen wrench for the first adjustment point. This will allow you to make the striker close like factory by moving the back of the door up or down as needed.



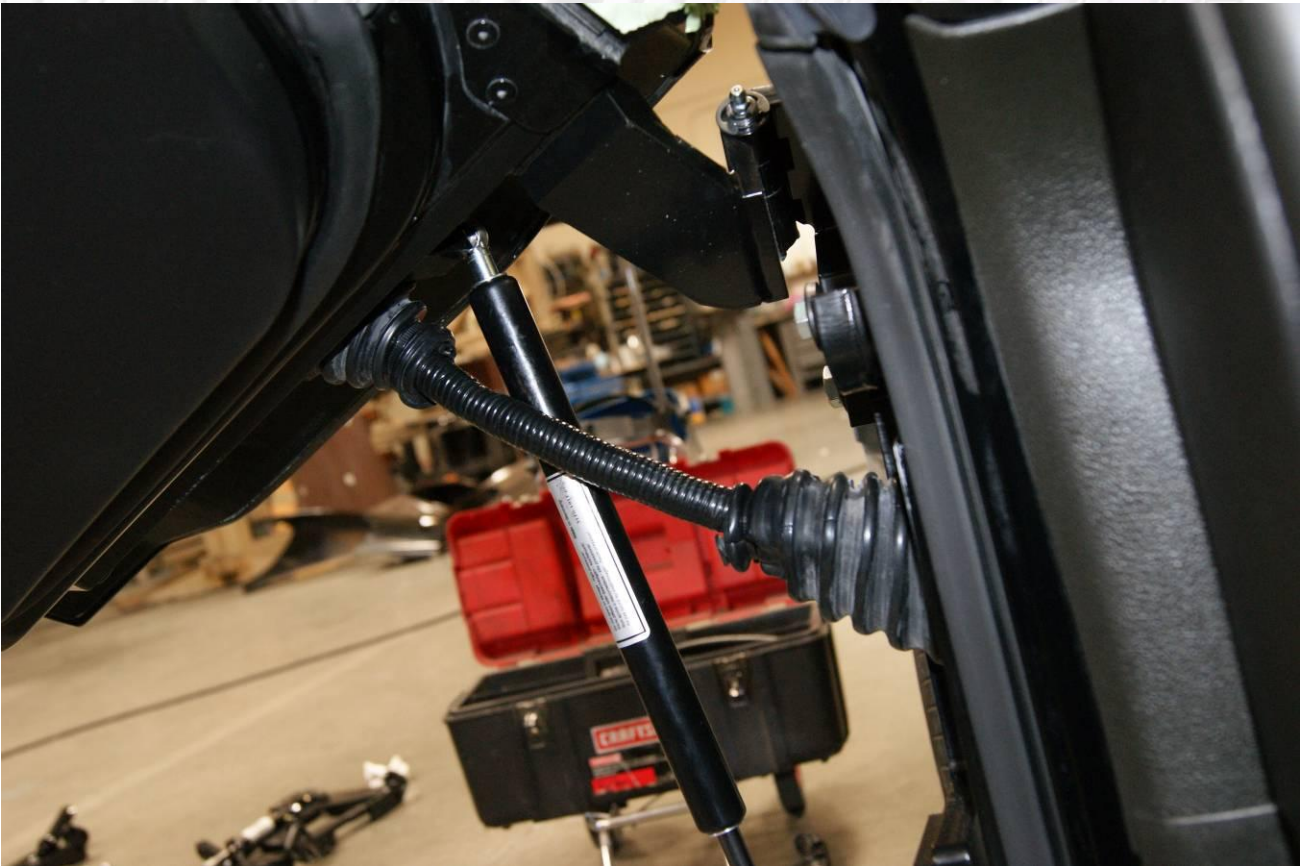
the second adjustment will help the door close like factory



Use the provided wire loom to protect the exposed wires.
Use high quality electrical tape and tightly wrap it around the wire loom as shown.



Use zip tie to secure the 2 half of the wire boot to the wire loom as show.



Cut the inner lip of your fender to make room for the new ZLR Door kit..Note: this picture is for reference only you may not need to cut as much on your particular vehicle.. all you need to cut is just enough for the kit to move freely.



Drill new hole for support bracket.. use M6x1 bolt.

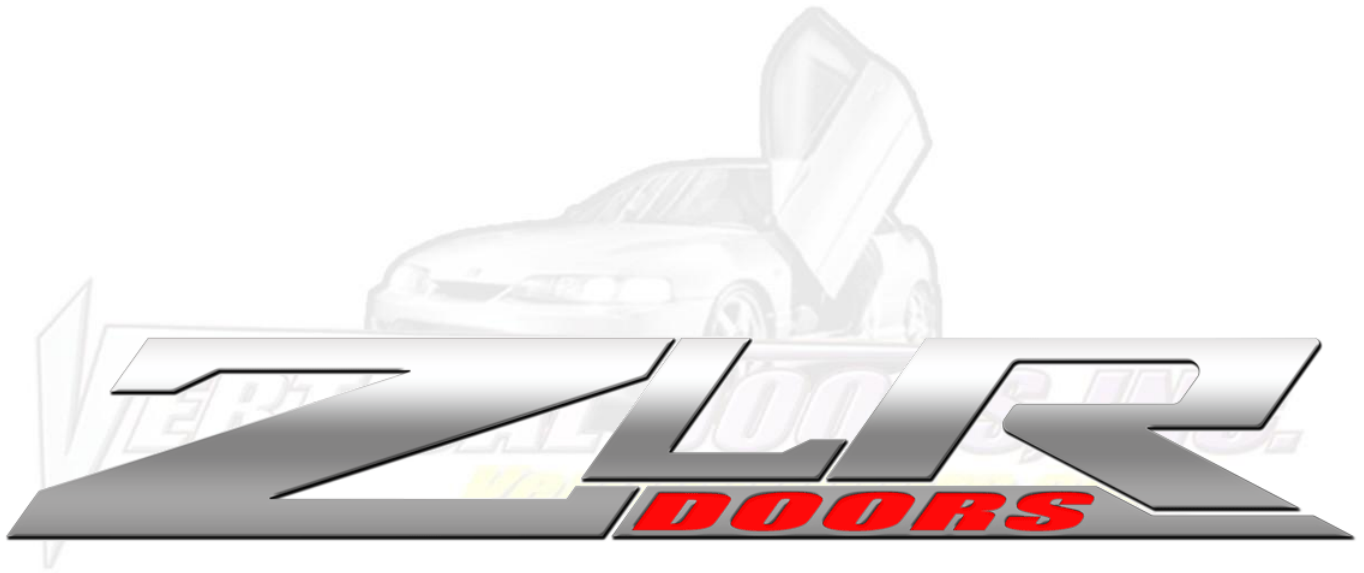
Use a power cutter and grinder to cut and take any sharp edges off.
touch it up with paint to give it a finish look.

Lift the door and Replace the fender

Hint(Make sure the electrical wires don't get pinched enough to damage wires)*

For the other side just follow the same steps.

**Thank you for your purchase of the
ZLR DOOR KIT FOR YOUR
CORVETTE C6 2005-2010**



BY



NOTE:

Vertical Doors Inc. assumes no responsibility for any damages caused by improper installation.