

C-6 ROUND HOLE SIDE VENT STAINLESS STEEL GRILLE KIT INSTALLATION INSTRUCTIONS



Thank-you for the purchase of our new C6 SIDE VENT GRILLE KIT product.

Please follow the installation and care instructions exactly to insure you get the maximum usage and benefits from the C6 SIDE VENT GRILLE KIT Product.

TOOLS AND ADDITIONAL ITEMS REQUIRED

- Automotive Goop or equivalent
- 1) Socket set and wrenches
- 2) Screwdriver (flat head)
- 3) Scissors
- 4) Pliers

INSTALLATION TIME – 1/2 hour per side

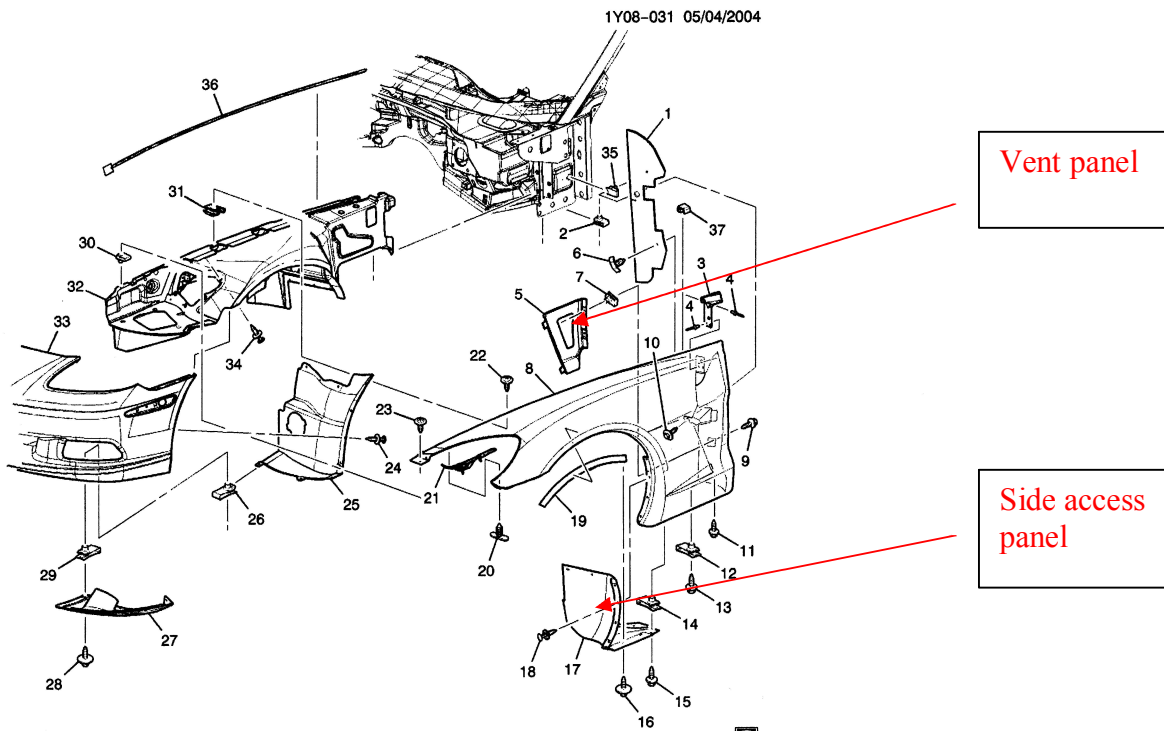
Before you begin, insure that you have the right kit for your car.

STEP # 1: Preparation

Raise the car and securely support it.
Remove the front wheel from the car from the car.
Remove the side access panel (See Diagram)



There are several New GM clips that need to be removed. Using a flat head screwdriver, gently raise the head of the clip. Once the head of the clip is raised (releasing the lock), remove the clip. (see picture above)

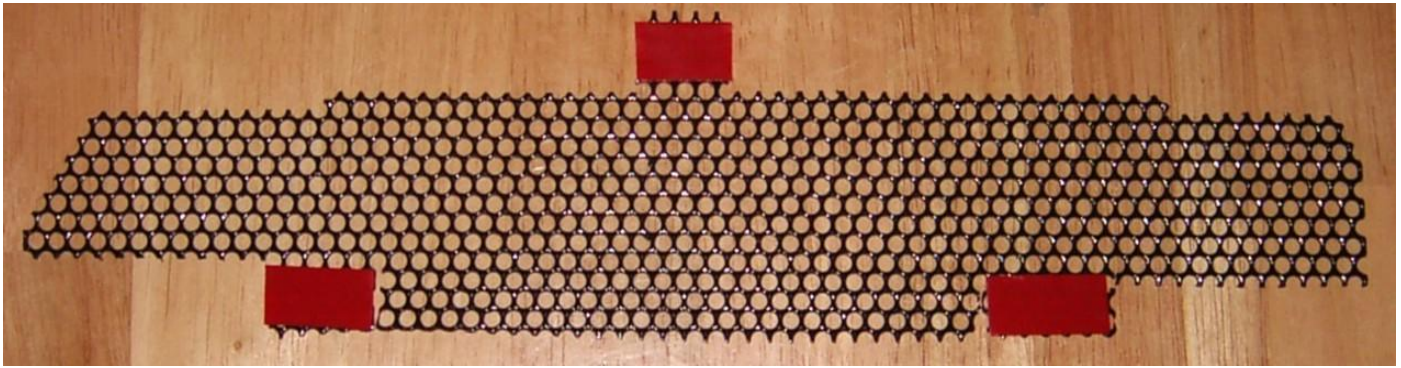


Thoroughly clean the two grilles using a degreaser.

You may also wish to further polish the grilles using a metal rubbing polish.

Cut the adhesive strips to fit the tabs on the side Grilles

The larger section of the grille will be facing towards the bottom of the vent opening. For the stainless steel grilles, insure the finished side is facing out words. **Adhesive strips will be placed on the finished side.**

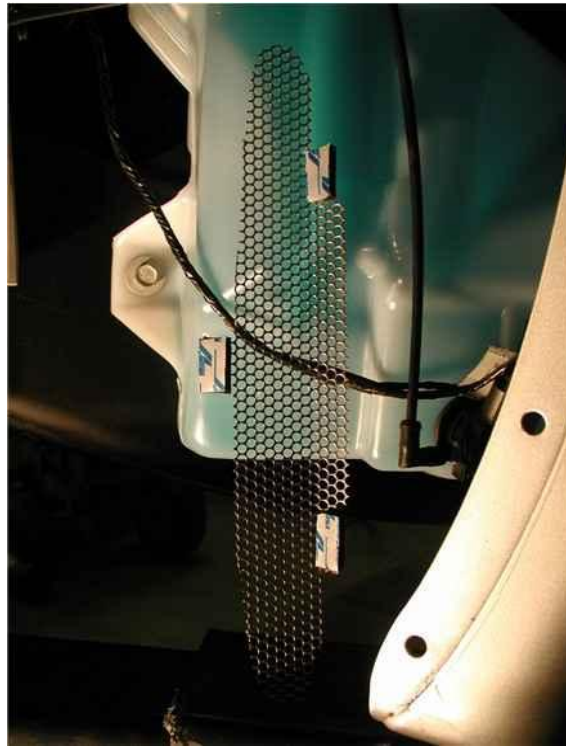


STEP# 2 INSTALLATION



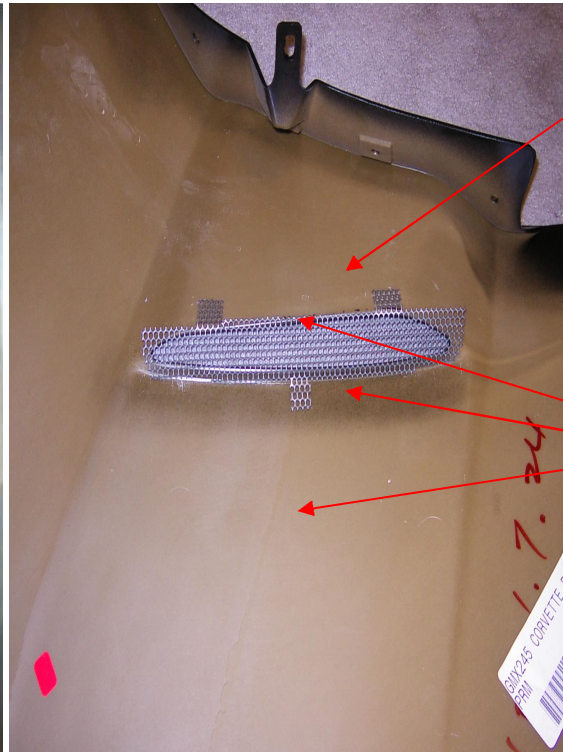
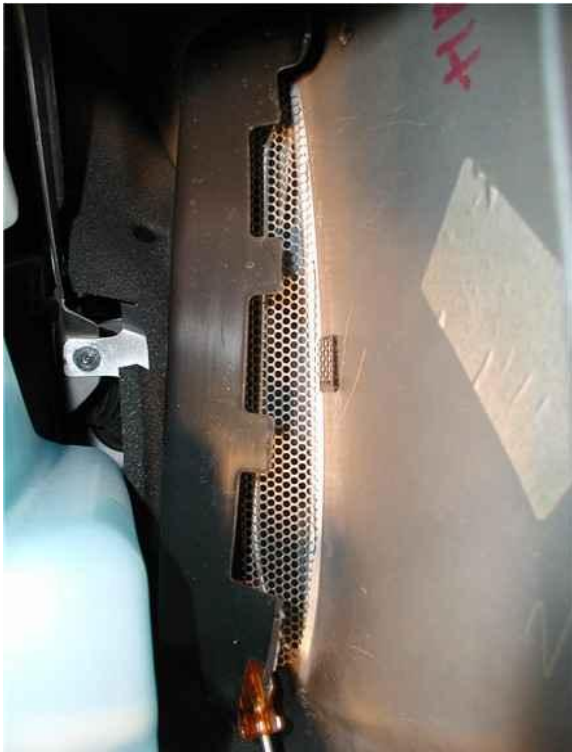
Once you have gained access into the fender area, you will need to remove the inner fender vent box (Black). This box is held into place using double sided tape (2 sections). Just break the tape bonds. You will need to remove a screw mounted to the black box and a bracket. (Mark the area where the tape was mounted, so you can re-install it in the same place.)

STEP # 3 INSTALLATION



Using a pair of pliers, bend the 3 tabs so they fit flush with the fender outline. Also bend the top section of the grille (area between the two top tabs) Approx 60 degrees in the same direction as the two tabs

STEP# 4 INSTALLATION



Adhesive strips
applied to 3 tabs

Apply the epoxy to
the top and side of
the metal tabs

Apply
automotive
goop to the
inside
perimeter
or the vent

Once you are satisfied with the position of the grille, insuring that it covers the entire open grill area, place a bead of automotive goop or equivalent around the inside perimeter vent opening. Remove the adhesive strips backing and apply.

Apply the Automotive Goop or equivalent epoxy directly on top and to and sides of the metal tabs. Insure that the epoxy incases the metal tab and approximately 5 mm of the surrounding panel surface.

**The adhesive strips are only designed to hold the grille in place while the applied epoxy dries.
Failure to apply the epoxy could cause the grille to become insecure.
Insure that there is no excess goop runoff from the outside of the vent!**

Let the grille sit for approximately 1 hour in order to let the adhesives set.

(MAKE SURE THE AREA WHERE THE ADHESIVE STRIPS ARE PLACED ARE FREE OF OIL AND POLISH SOLUTION. USE A DEGREASER OR RUBBING ALCOHOL.)

Re-install the inner fender box and the access vent panel.

FINISHED !

CARE OF THE C6 ROUND HOLE STAINLESS STEEL SIDE VENT GRILLE KIT PRODUCT

The product is designed to last the entire life of your car under normal conditions. The product will resist heat, cold, rain, wind, and impacts. Although this product is durable, it will not survive a major impact or A collision.

Your C6 GRILLE KIT is high quality stainless steel and can be cleaned normal car wash soap. You may also a stainless steel polish and a buffer to increase the shine factor. (You must wait 24 hours before attempting to clean the grilles)



If you have any questions or concerns, please contact us or e-mail us.

Please view the our website for tips or new products at www.ECKLERS.com